

ACTR2 Antibody (Center)
Purified Rabbit Polyclonal Antibody (Pab)
Catalog # AP6533c**Specification**

ACTR2 Antibody (Center) - Product Information

Application	WB, FC, IHC-P,E
Primary Accession	P61160
Other Accession	Q5M7U6 , P61161 , P53488 , A7MB62 , Q7ZTP2
Reactivity	Human
Predicted	Xenopus, Bovine, Chicken, Mouse, Rat
Host	Rabbit
Clonality	Polyclonal
Isotype	Rabbit IgG
Calculated MW	44761
Antigen Region	191-219

ACTR2 Antibody (Center) - Additional Information**Gene ID** 10097**Other Names**

Actin-related protein 2, Actin-like protein 2, ACTR2, ARP2

Target/Specificity

This ACTR2 antibody is generated from rabbits immunized with a KLH conjugated synthetic peptide between 191-219 amino acids from the Central region of human ACTR2.

Dilution

WB~~1:1000

FC~~1:10~50

IHC-P~~1:50~100

E~~Use at an assay dependent concentration.

Format

Purified polyclonal antibody supplied in PBS with 0.09% (W/V) sodium azide. This antibody is prepared by Saturated Ammonium Sulfate (SAS) precipitation followed by dialysis against PBS.

Storage

Maintain refrigerated at 2-8°C for up to 2 weeks. For long term storage store at -20°C in small aliquots to prevent freeze-thaw cycles.

Precautions

ACTR2 Antibody (Center) is for research use only and not for use in diagnostic or therapeutic procedures.

ACTR2 Antibody (Center) - Protein Information

Name ACTR2

Synonyms ARP2

Function ATP-binding component of the Arp2/3 complex, a multiprotein complex that mediates actin polymerization upon stimulation by nucleation-promoting factor (NPF) (PubMed:[9000076](#)). The Arp2/3 complex mediates the formation of branched actin networks in the cytoplasm, providing the force for cell motility (PubMed:[9000076](#)). Seems to contact the pointed end of the daughter actin filament (PubMed:[9000076](#)). In podocytes, required for the formation of lamellipodia downstream of AVIL and PLCE1 regulation (PubMed:[29058690](#)). In addition to its role in the cytoplasmic cytoskeleton, the Arp2/3 complex also promotes actin polymerization in the nucleus, thereby regulating gene transcription and repair of damaged DNA (PubMed:[17220302](#), PubMed:[29925947](#)). The Arp2/3 complex promotes homologous recombination (HR) repair in response to DNA damage by promoting nuclear actin polymerization, leading to drive motility of double-strand breaks (DSBs) (PubMed:[29925947](#)).

Cellular Location

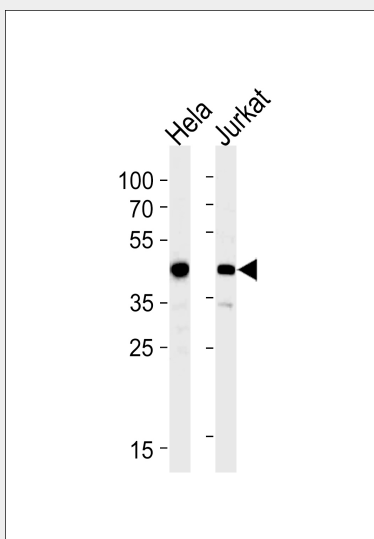
Cytoplasm, cytoskeleton. Cell projection. Nucleus

ACTR2 Antibody (Center) - Protocols

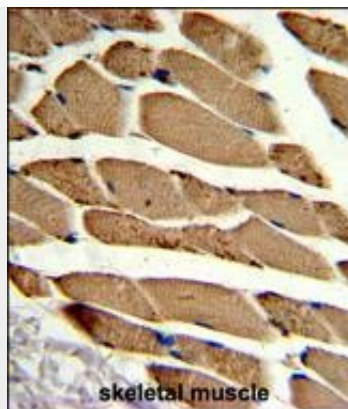
Provided below are standard protocols that you may find useful for product applications.

- [Western Blot](#)
- [Blocking Peptides](#)
- [Dot Blot](#)
- [Immunohistochemistry](#)
- [Immunofluorescence](#)
- [Immunoprecipitation](#)
- [Flow Cytometry](#)
- [Cell Culture](#)

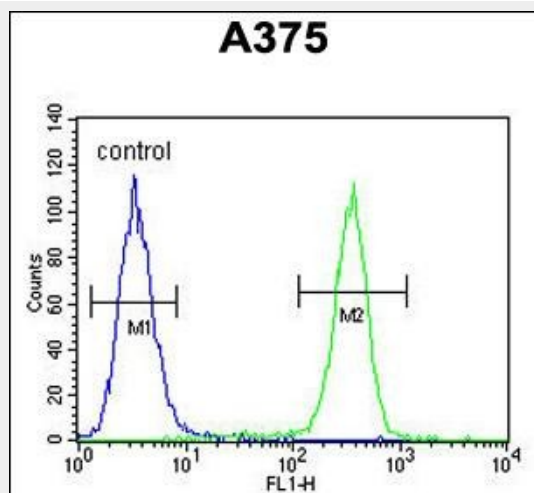
ACTR2 Antibody (Center) - Images



ACTR2 Antibody (Center) (Cat.# AP6533c) western blot analysis in HeLa, Jurkat cell line lysates (35ug/lane). This demonstrates the ACTR2 antibody detected the ACTR2 protein (arrow).



Formalin-fixed and paraffin-embedded human skeletal muscle reacted with ACTR2 Antibody (Center), which was peroxidase-conjugated to the secondary antibody, followed by DAB staining. This data demonstrates the use of this antibody for immunohistochemistry; clinical relevance has not been evaluated.



ACTR2 Antibody (Center) (Cat. #AP6533c) flow cytometric analysis of A375 cells (right histogram) compared to a negative control cell (left histogram). FITC-conjugated goat-anti-rabbit secondary antibodies were used for the analysis.

ACTR2 Antibody (Center) - Background

ACTR2 is known to be a major constituent of the ARP2/3 complex. This complex is located at the cell surface and is essential to cell shape and motility through lamellipodial actin assembly and protrusion.

ACTR2 Antibody (Center) - References

Gonzalez, V., Cell Host Microbe 5 (3), 259-272 (2009)
Weisswange, I., Nature 458 (7234), 87-91 (2009)